



Ball Transfer Unit A3006-16


Ball Units Series A-Flange - Wheel DL


 -30 °C - +70 °C


swivels easily


wear resistant


shock proof

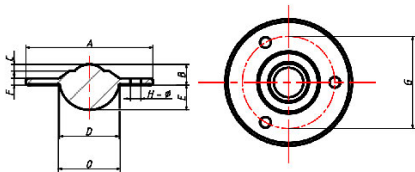

floor protective


weather proof

Wheel

Ball: zinc-plated or nylon or stainless steel with sealing lip

Housing, zinc-plated or stainless steel



Ball Transfer Unit

Ball-Ø mm: 19

Finish housing: steel zinc plated

Finish Balls: stainless steel

Load Capacity up kg: 25

Load Capacity down kg: 10

A mm: 61,0

B mm: 10,0

C mm: 3,2

D mm: 29,1

E mm: 12,0

F mm: 3,2

G mm: 44,5

H mm: 5,1

O mm: 29,5

Advantages

- ✓ Low profile
- ✓ Several holes to let out dirt
- ✓ Sealing lip

©Copyright 2024 Rollenbau GmbH, www.rollenbau.at 07.05.2024

Applications

- Haulage way
- Assembly lines
- Mechatronik